

Nordic

Flooring

The
Click Collection

The future of flooring

www.ehrenborg.se

The Nordic Flooring Click Collection offers a luxurious solution for residential environments and commercial environments such as retail, schools, kindergartens and offices.

Nordic Flooring Click is easy to install and requires no adhesive, you simply click the tiles together using the 5G locking technology. This is the most advanced type of Fold Down system on the market, based on the single action method for a fast and easy installation.

The collection is available in 16 attractive designs, from classic and rustic Wood with realistic plank sizes, to stylish and elegant Stone with natural embossing.

A floor is much more than just a floor; it shows attitude, sets the mood in a room and creates the overall impression. Above all, with The Nordic Flooring Click Collection you also have a flooring free from phtalates.

Be inspired!



Wood
220 x 1210 x 5,5 mm



EWC 61510



EWC 54514



EWC 54511



EWC 73012



EWC 61518



EWC 54119



EWC 61513



EWC 61513



EWC 61513

Wood

220 x 1210 x 5,5 mm



EWC 61513



EWC 70516



EWC 70518



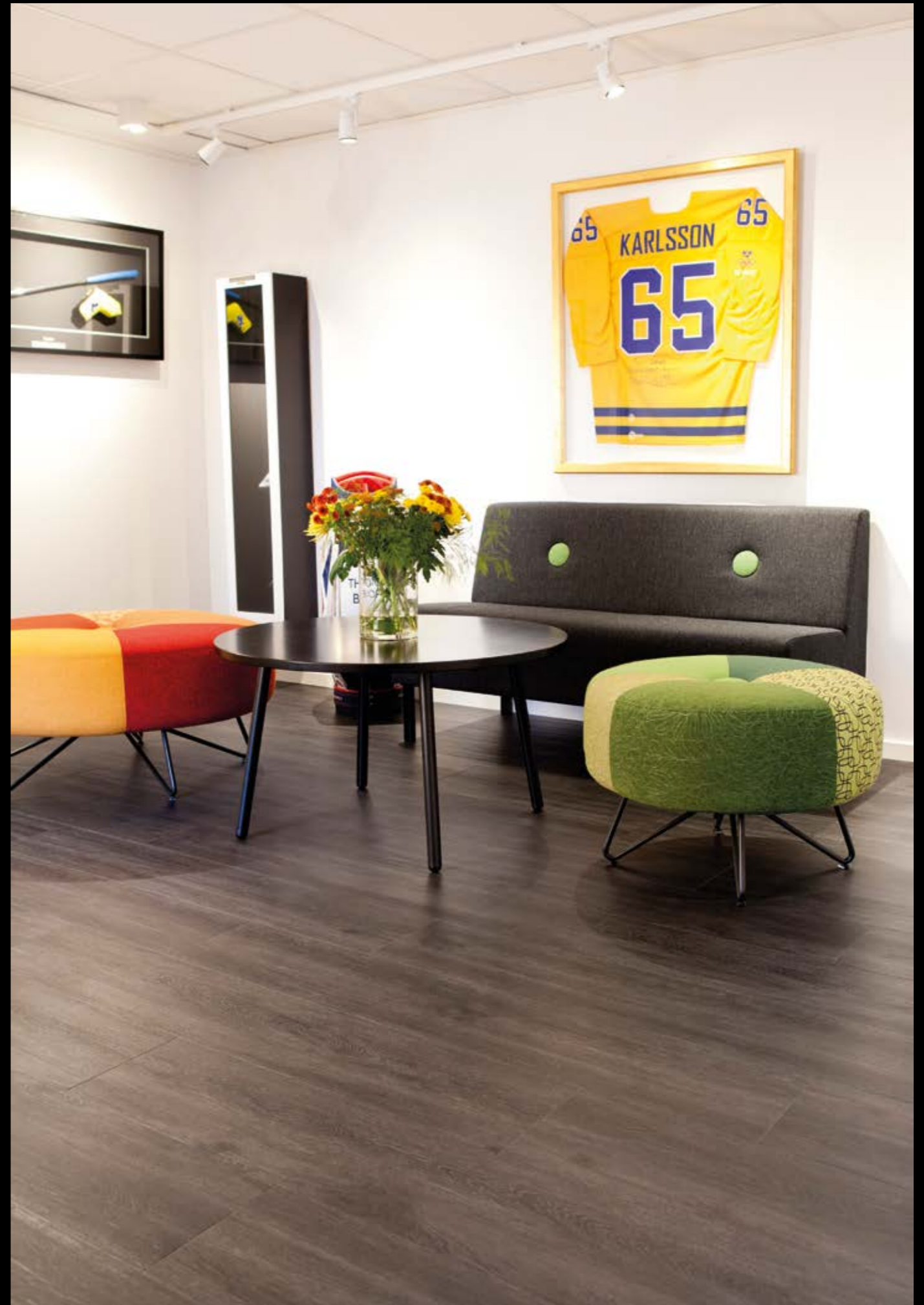
EWC 55211



EWC 61516



EWC 61511



EWC 61511

Stone

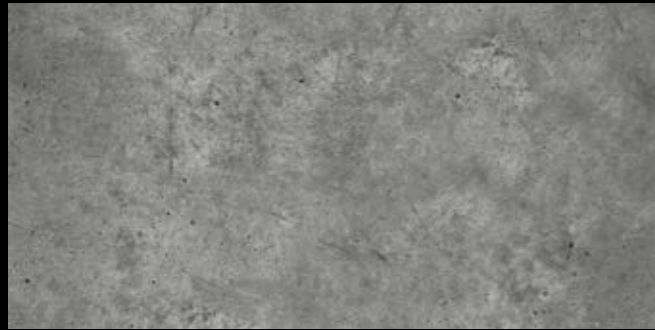
305 x 610 x 5,5 mm



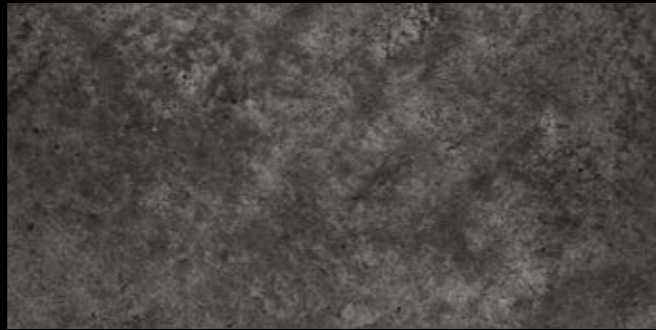
ESC 50514



ESC 50515



ESC 50512



ESC 50517



ESC 50512



ESC 50512

Nordic Flooring - The Click Collection

Product information

Typ av golvbeläggning Type of flooring Art des Bodenbelags	EN 649	Heterogena designplattor, fasade kanter Heterogenous design floor, bevelled edges Vinyl auf Kompakträgerplatte, gefaste Kanten
Storlek Wood Size Wood Formate Wood	EN 427	220 x 1210 mm 1,86 m ² /per box 1,86 m ² /im Paket
Storlek Stone Size Stone Formate Stone	EN 427	305 x 610 mm 1,86 m ² /per box 1,86 m ² /im Paket
Total tjocklek Thickness overall Gesamtdicke	EN 428	5,5 mm
Tjocklek slitskikt Thickness wear layer Nutzschichtdicke	EN 429	0,55 mm + PUR/PU Coating
Total vikt Weight in total Flächengewicht	EN 430	6000 g/m ²

Technical Specifications

Användningsområde Wear group classification Beanspruchungsklasse	EN 685	42
Kemikaliebeständighet Chemical resistance Chemikalienbeständigkeit	EN 423	Godkänt Pass Ja
Länkhjulsbelastning Castor chair resistance Stuhlrolleneignung	EN 425	Godkänt, typ W Pass, type W Ja, typ W
Intryckskänslighet Residual indentation Resteindruck	EN 433	<0,08 mm
Dimensionsstabilitet Dimensional stability Dimensionsstabilität	EN 434	Godkänt Pass Ja
Flexibilitet Flexibility Flexibilität	EN 435	Godkänt Pass Ja
Nötningsbeständighet Abrasion resistance Verschleißfestigkeit	EN 660	Group T
Friktion Slip resistance Rutschhemmstufe	DIN 51130	R9
Ljusstabilitet Light stability Lichtechtheit	EN 2105-B0	>6
Draghållfasthet i fogar Tensile Strength in the joints Zugfestigkeit der Klickverbindung		600 kg/m
Golvvärme Floor heating Fußbodenheizung		Ja, max +27 °C Suitable, max +27 °C Geeignet für Warmwasser, max +27 °C
Brandklassning Fire Classification Brandverhalten	EN 13501-1	Bfl - S1
Click Patent		5G-C LVT, Licensed by Välinge

Ehrenborg & Co AB
Aminogatan 22
SE-431 53 Mölndal
Phone: +46 (0)31 86 35 95
www.ehrenborg.se

