



CONNOR SPORTS

**HARDWOOD
SYSTEMS**

DURACUSHION I™

FLOATING SYSTEM

CERTIFIED
BY THESE
LEADERS
IN SPORT



connorsports.com/hardwood

DURACUSHION I™

FLOATING SYSTEM

Connor Sports • 800.283.9522 • 847.290.9020 • info@connorsports.com • connorsports.com/hardwood



DuraCushion I includes standard PVC Duracushion pads below double layer plywood subfloor construction.

DURACUSHION I FLOATING SYSTEM



RESILIENCE

3/8" (10 mm) DuraCushion PVC Resilient Pads

FLOORING

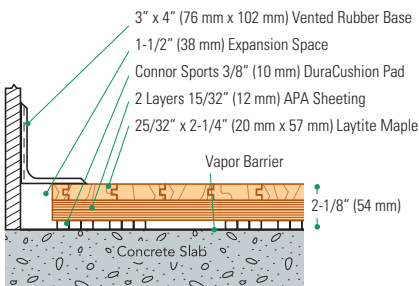
MFMA Northern Hard Maple

SUBFLOOR CONSTRUCTION

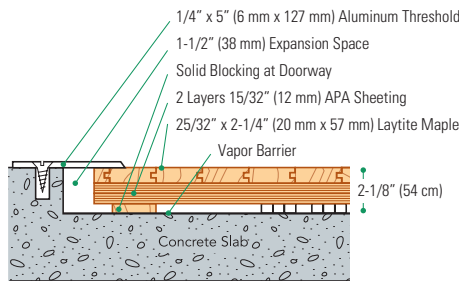
Two Layers of 15/32" (12 mm) APA Rated Plywood Sheathing

Slab Depression: 3/8" (10 mm) pad: 25/32" (20 mm) flooring - 2 1/8" (54 mm) • 33/32" (26 mm) flooring - 2 3/8" (60 mm) • 5/8" (10 mm) pad: 25/32" (20 mm) flooring - 2 3/8" (60 mm) • 33/32" (26 mm) flooring - 2 5/8" (67 mm)

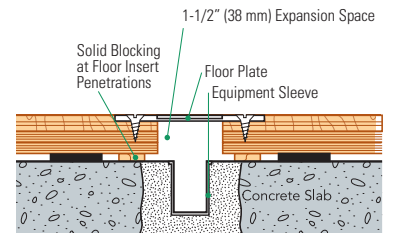
Wall Base Detail



Threshold Detail (Optional Accessory)



Equipment Detail (Optional Accessory)



Manufacturing:
ISO 9001:2008
 CERTIFIED
ISO 14001:2004
 CERTIFIED



Testing Laboratory:
 United States Sports
 Surfacing Laboratory



Certified Testing:
 ISSS Scientific
 Body Membership



Green Status
 Managed Forests,
 Certification Available



Environmental Product Declaration
 The First Sports Floor Manufacturer to Publish UL
 Certified Product-Specific Environmental
 Performance In Compliance with LEED V.4