

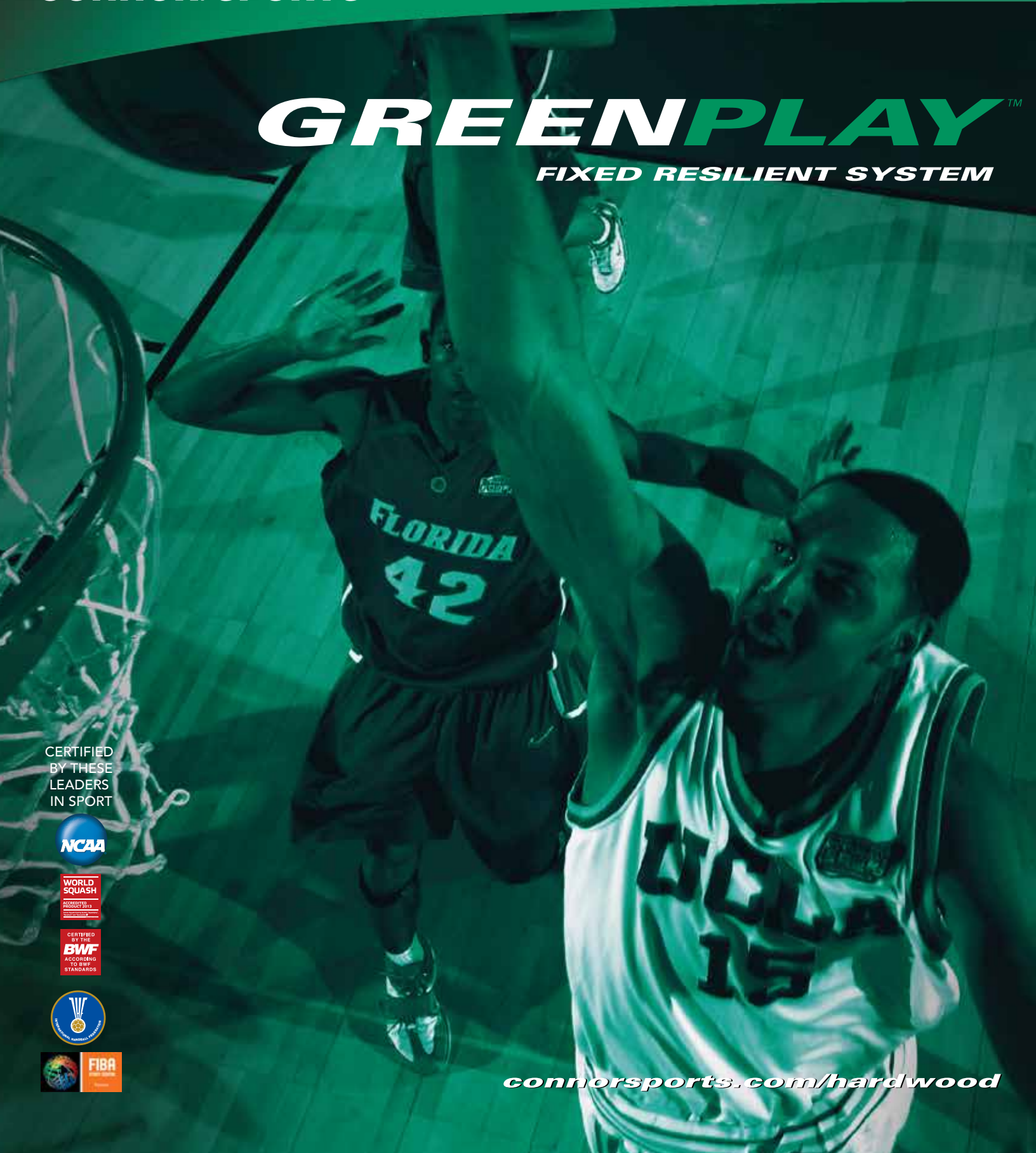


CONNOR® SPORTS

**HARDWOOD
SYSTEMS**

GREENPLAY™

FIXED RESILIENT SYSTEM



CERTIFIED
BY THESE
LEADERS
IN SPORT



connorsports.com/hardwood

GREENPLAY™

FIXED RESILIENT SYSTEM

Connor Sports • 800.283.9522 • 847.290.9020 • info@connorsports.com • connorsports.com/hardwood



GreenPlay offers the inclusion of specially molded recycled polypropylene subfloor panels that allow for additional recycling when full wear life of the floor is eventually reached.

Subfloor panels include special resilient pad cavities with performance ridges to create two-stage resilience and protect pads when pressed with heavy non-athletic loads.

GREENPLAY FIXED RESILIENT SYSTEM



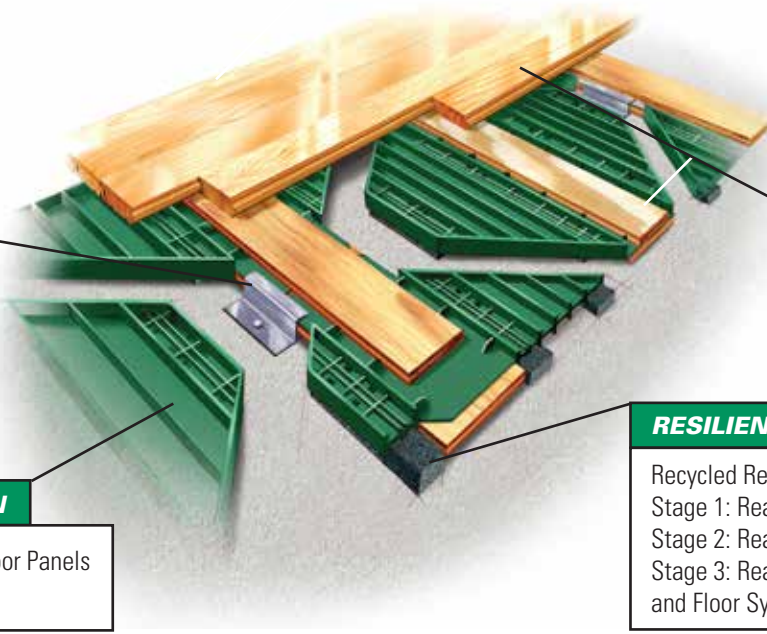
Performance Status:
Meets or exceeds all the requirements of DIN 18032, part 2, 2001

ANCHORAGE

Sectional Channel, Heavy-duty, Buckle Resistant Steel Channel Provides Great Resistance to Pin Pull Through and Upward Pressure

SUBFLOOR CONSTRUCTION

ISO 9001:2008 Manufactured Subfloor Panels from Recycled Engineered Polymer



FLOORING

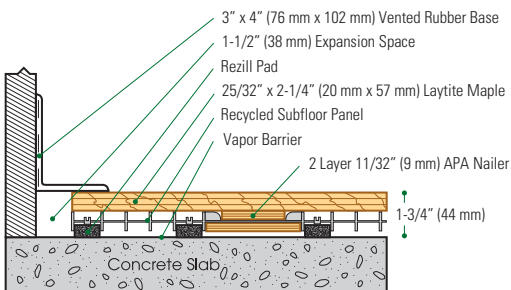
MFMA Northern Hard Maple

RESILIENCE

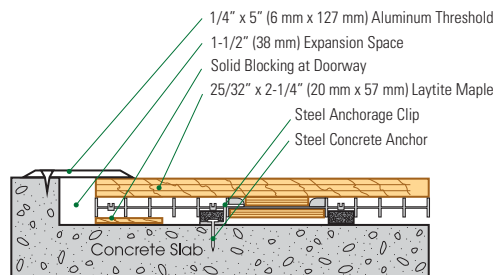
Recycled Rezill Lineal Pads.
Stage 1: React to Light Athletic Loads
Stage 2: React to Heavy Athletic Loads
Stage 3: React with Protective Cushion Housing and Floor System Support.

Slab Depression: 25/32" (20 mm) flooring – 1-3/4" (44 mm) • 33/32" (26 mm) flooring – 2" (51 mm)

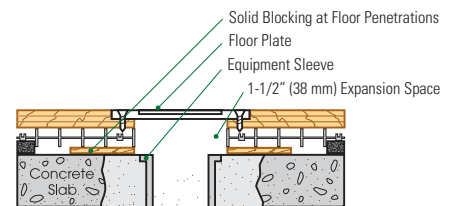
Wall Base Detail



Threshold Detail (Optional Accessory)



Equipment Detail (Optional Accessory)



Manufacturing:
ISO9001:2008
CERTIFIED
ISO14001:2004
CERTIFIED



Recycled Contribution:
GreenPlay Subfloor System Includes Components with Recycled Content



Testing Laboratory:
United States Sports Surfacing Laboratory



Certified Testing:
ISSS Scientific Body Membership



Green Status
Managed Forests, Certification Available



Environmental Product Declaration
The First Sports Floor Manufacturer to Publish UL Certified Product-Specific Environmental Performance In Compliance with LEED V.4